

SUMMARY

To access AsaDia 3	page 2
The diagnosis page	pages 3 to 6
Structure of diagnosis page	page 3
Choice of criteria, display of the result, display of a picture of the table	page 4
Displaying a photo in full page, displaying a reduced table.....	page 5
The four buttons of explanation	page 6
Full page photography	pages 7 to 10
Buttons of explanation	page 7
Explaining arrows	page 8
Other photos.....	page 9
Resizing the photo, Quit the Full Page Mode.....	page 10
List of lesions	page 11
List of photos	page 12

Sommaire 19/04/2018		version 3.1 page 1 sur 12
-------------------------------	--	------------------------------

Detailed instructions for AsaDia 3 Web

INSTRUCTIONS

To access AsaDia 3 on the Web, it is necessary to enter the login address.

To do this, the safest way is to log on to the ASA website:
www.asa-spv.asso.fr
 and choose in the AsaDia tab the line "AsaDia 3 sur le Web".

Click on the English flag to access the international version of AsaDia.

The screen that appears then allows you to identify yourself with the email address provided by ASA.

Once it is done, the program sends you to the page of the diagnosis of lesions (see below).

The help icon will accompany you throughout your use of AsaDia 3. The written documentation will be adapted to the current part of the program. On this page you will get the full user manual of AsaDia 3.

<p>To access AsaDia 3</p> <p>19/04/2018</p>	<p>Login address Enter his ID Go to the diagnosis page</p>	<p>version 3.1</p> <p>page 2 of 12</p>
--	--	--

Detailed instructions for AsaDia 3 Web

INSTRUCTIONS

The diagnosis page includes, like the vast majority of pages on the site, a horizontal bar of tabs to change pages.

It allows to select the photos of the lesions based on criteria concerning the species, the organ and the name of the lesion, by clicking in checkboxes.

A footer gives the administrative information on the ASA and allows to report a problem, by email, to the Webmaster.

asa
animal société aliment

Visit the ASA Website Find a lesion List of lesions List of photos

Find a lesion

Area of choice of species

Choose species
 Cattle Sheep Goats Pigs Equins

Choose organs

Digestive system :
 Tongue Esophagus Digestive tract
 Liver Pancreas Peritoneum
 Pluck

Respiratory system :
 Trachea Lung Pleura

Circulatory system :
 Heart Pericardium Blood vessels

musculoskeletal system :
 Bone and joint Muscles Carcass

Genito-urinary system :
 Kidney Bladder
 Female genital system Male genital system
 Teat

Other :
 Connective tissue Lymph node Spleen
 Thymus Head Skin Adrenal gland
 Thyroid Nervous system

Choose lesions

- actinobacillosis/ actinomycosis
- Adipose xanthosis
- Amyloidosis
- Anthracosis
- Anthrax and Blackleg (lesions associated with)
- Aortic atheromatosis
- Aphtha
- Arthritis
- Ascariidiosis
- Atrophic rhinitis (lesions associated with)
- Blood soaked meat
- Blood splashing
- Bovine Viral Diarrhea (lesions associated with)
- Bronchopneumonia
- Brucellosis (lesions associated with)
- Bursitis
- Cachexia
- Cadaverous meat
- Calcinosin
- Caseous lymphadenitis
- Cerebral coenurosis
- Ceroidosis
- Cholecystitis
- Chronic interstitial hepatitis

Area of choice of organs

Area of choice of lesions

Footer of the page

Site officiel de l'association Animal - Société - Aliment (ASA)
 Adresse : Bâtiment Jean GIRARD - Ecole Nationale Vétérinaire d'Alfort - 7 avenue du Général de Gaulle - 94704 Maisons-Alfort Cedex FRANCE
 Téléphone : + 33 (0)1 56 29 36 30 Fax : + 33 (0)9 61 24 33 81 e-mail : asa-spv@wanadoo.fr
 Pour signaler un problème, cliquez sur le lien suivant écrire au webmaster

The diagnosis page

19/04/2018

Structure de The diagnosis page

version 3.1

page 3 of 12

Detailed instructions for AsaDia 3 Web

INSTRUCTIONS

To choose a criterion, simply click in the corresponding check box.

The research summary is in the blue box below the search criteria.
If the number of photos found is greater than 200, a "View Photos" button appears.
It displays all the selected photographs as a complete list.

If the number of photos found is greater than 20 but less than 200, a table displays the 10 by 10 photos with buttons to display the other pages in the table.

A click on the button "View photographs" allows to display the 10 photographs present in the table in the form of a complete list.

A click on a line shows, under the table, the corresponding photo with the explanation and management buttons detailed below (see Display of the complete list).

Choose species

Cattle Sheep Goats Pigs Equines

1075 photos meets the proposed criteria:
on Cattle

Cancel Search

See photos

177 photos meets the proposed criteria:
on Cattle in Liver

Cancel Search

List of photos

Find:

N°	Organ	Species	Lesion
10396	Liver	Cattle	Liver necrobacillosis
10402	Liver	Cattle	Omphalophlebitic abscess
10407	Liver	Cattle	Thrombus
10408	Liver	Cattle	Passive congestion
10416	Liver	Cattle	Necrotizing insular hepatitis
10417	Liver	Cattle	Necrotizing insular hepatitis
10419	Liver	Cattle	Toxi-infectious liver
10422	Liver	Cattle	Toxi-infectious liver
10423	Liver	Cattle	Necrotizing insular hepatitis
10429	Liver	Cattle	actinobacillosis/ actinomycosis

Seeing 1 to 10 from 177 photos

First Previous

1

2

3

4

5

...

18

Next

Last

See photos

List of photos

Find:

N°	Organ	Species	Lesion
10396	Liver	Cattle	Liver necrobacillosis
10402	Liver	Cattle	Omphalophlebitic abscess
10407	Liver	Cattle	Thrombus
10408	Liver	Cattle	Passive congestion
10416	Liver	Cattle	Necrotizing insular hepatitis
10417	Liver	Cattle	Necrotizing insular hepatitis
10419	Liver	Cattle	Toxi-infectious liver
10422	Liver	Cattle	Toxi-infectious liver
10423	Liver	Cattle	Necrotizing insular hepatitis
10429	Liver	Cattle	actinobacillosis/ actinomycosis

Seeing 1 to 10 from 177 photos

First Previous

1

2

3

4

5

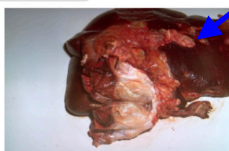
...

18

Next

Last

See photos



Thrombus on Liver in cattl (10407)

The diagnosis page

19/04/2018

Choice of criteria
Display of the result
Display a picture of the table

version 3.1

page 4 of 12

Detailed instructions for AsaDia 3 Web

INSTRUCTIONS

On the mouseover on the thumbnail of the lesion shows a cursor transformed into a magnifying glass to indicate that it is possible to enlarge the image.

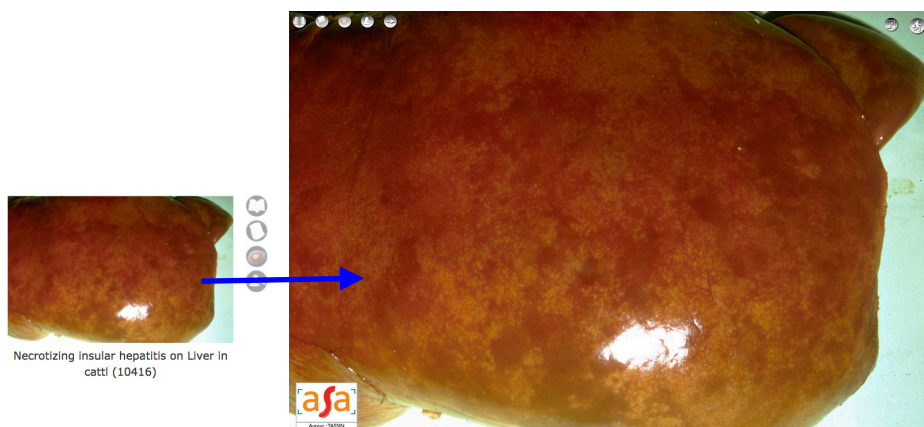
A click on it displays the photograph in full page.

The detail of the present buttons will be explained below (see display in full list for the thumbnail and full-screen display for the image in large).

It is possible, in a presentation by table, to reduce the number of photographs. To do this, simply enter in the "Search" field the string of characters that will be searched for in the name of the lesion.

Here, the string "thr" reduces the selection of 177 photos to 6 which correspond to those that have "thr" in the name of the lesion.

A click on the button "View photographs" displays the photos visible in the table in complete list (cf display of the complete list).



Necrotizing insular hepatitis on Liver in cattl (10416)

List of photos

N°	Organ	Species	Lesion
10407	Liver	Cattle	Thrombus
11485	Liver	Cattle	Thrombus
11488	Liver	Cattle	Thrombus
11499	Liver	Cattle	Thrombus
31129	Liver	Cattle	Thrombus
60034	Liver	Cattle	Thrombus

Search field: Find: thr

Seeing 1 to 6 from 6 photos (Selection on 177 photos)

First Previous 1 Next Last

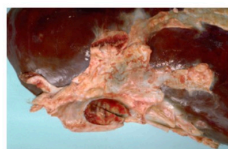
Seeing 1 to 6 from 6 photos (Selection on 177 photos)

First Previous 1 Next Last

See photos



Thrombus on Liver in cattl (10407)



Thrombus on Liver in cattl (11485)

The diagnosis page

19/04/2018

Displaying a photo in full page
Display a collapsed table

version 3.1

page 5 of 12

Detailed instructions for AsaDia 3 Web

INSTRUCTIONS

If the number of photos found is less than 20, they are displayed in a complete list, that is in the form of thumbnails with the visualization and management buttons to their right.

Four buttons to the right of the photo have a unique vocation to explain the photo concerned.

The macroscopic description

What do you do ?

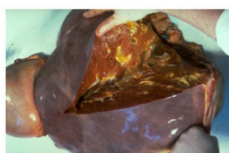
Description of the lesion

Legal references

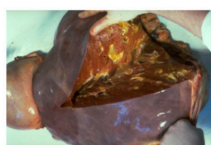
Of course, as seen previously, the photo is viewable in full page with a simple click on it.

1 photo meet the proposed criteria:
Caseous lymphadenitis,Icterus on Cattle in Liver

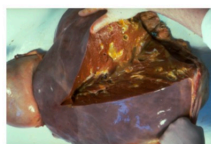
Cancel Search



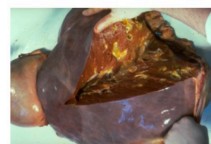
Icterus on Liver in cattl (30588)



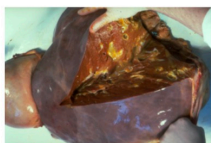
Icterus on Liver in cattl (30588)



Icterus on Liver in cattl (30588)



Icterus on Liver in cattl (30588)



Icterus on Liver in cattl (30588)

Macroscopic description

Enlarged liver. Distended bile ducts. When the ducts are cut, a mucoid bile flows abundantly. The connective tissue of the bile ducts and blood vessels is yellow. Diffuse sclerosis and passive congestion.

What do you do ?

Yellow pigmentation of the connective tissue. Check the mucous membrane, the eye, the endartery of small and medium sized arteries, cardiac valves and the synovia (except in horses), in which specie the synovia is physiologically yellow). Laboratory test can confirm the diagnosis (Piette or Remington and Fourie).

Description of the lesion

Yellow pigmentation (green to orange) of the connective tissue. It can be seen on the mucous membrane, the eye, the endartery of small and medium sized arteries, cardiac valves and the synovia (except in horses, in which specie the synovia is physiologically yellow). There also are lesions on the kidney and the urine: the kidney cortex seems green and the medulla a more or less bright yellow.

PRE HEPATIC ICTERUS: (hemolytic) is caused by an increased destruction of the red blood cells. It is associated with splenomegaly. At the beginning, the liver is fully functional. The liver is enlarged and of a greenish color because of the increased elimination of bile. Secondly, degenerative lesions appear which leads to the mixed icterus.

HEPATOCELLULAR: (liver failure) it is caused by liver dysfunction. This pathology is associated with enlarged liver and congestion which causes an orange coloration of the connective tissue. The lesions depending on the etiology: degenerative hepatitis, acute or chronic interstitial hepatitis, massive steatosis... The permeability of the bile ducts is intact.

POST HEPATIC ICTERUS: (cholestasis) caused by an interruption to the drainage of bile (tumor or obstruction of the biliary ducts). The pigmentation is (greenish yellow). The kidney is enlarged, greenish because of the accumulation of bile. On cut, the bile leaks without effort from the liver tissue. The lesions responsible for the cholestasis can be observed (tumor, calculus, parasites, etc...)

Legal references

REGULATION (EC) No 854/2004 Annex I Section II Chapter V - § 1 subparagraph u Meat [...] if in the opinion of the official veterinarian, after examination of all the relevant information, it may constitute a risk to public or animal health or is for any other reason not suitable for human consumption

The diagnosis page

19/04/2018

View full list
The four buttons of explanation

version 3.1

page 6 of 12

Detailed instructions for AsaDia 3 Web

INSTRUCTIONS

All the thumbnails of the site are displayable in full page of a simple click on it.

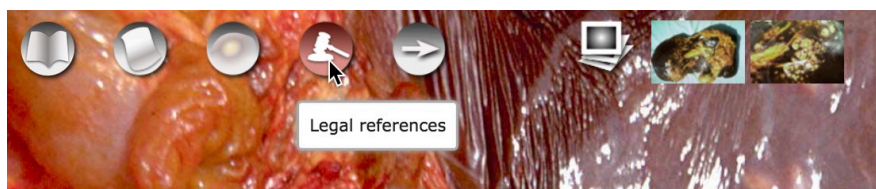
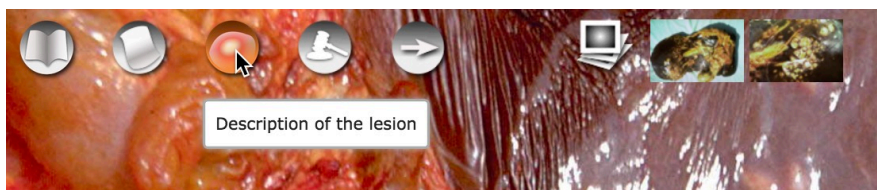
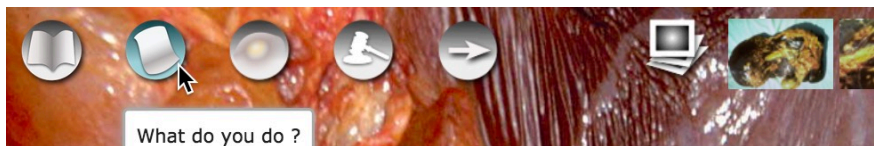
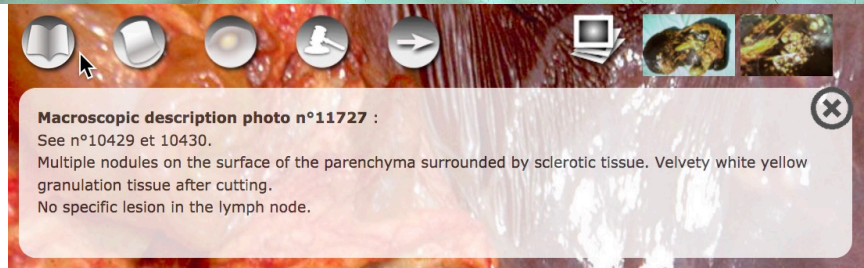
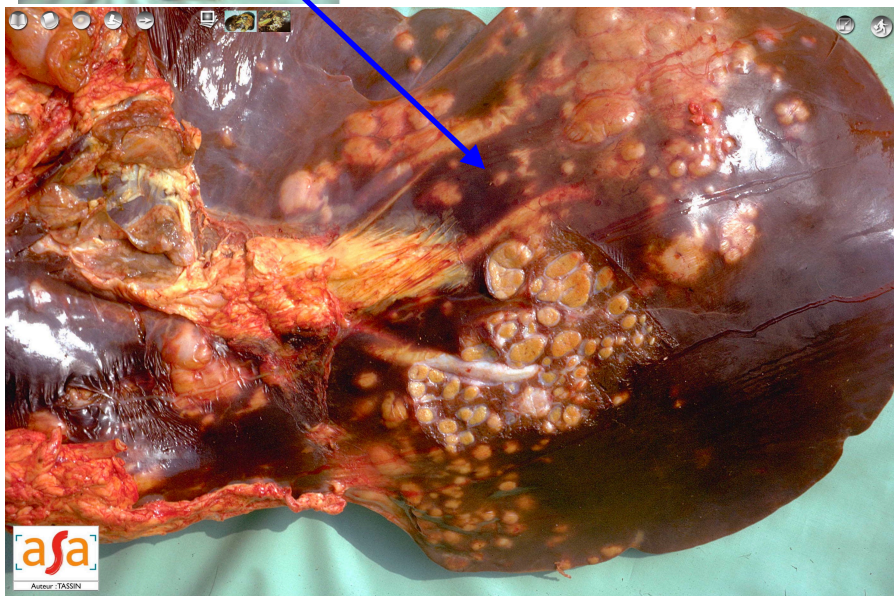
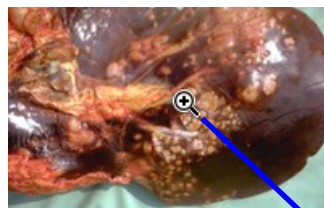
Four buttons at the top left of the photo have a unique purpose to explain the photo concerned.
The hover activates the image of the icon and the click shows the appropriate text.

The macroscopic description

What do you do ?

Description of the lesion

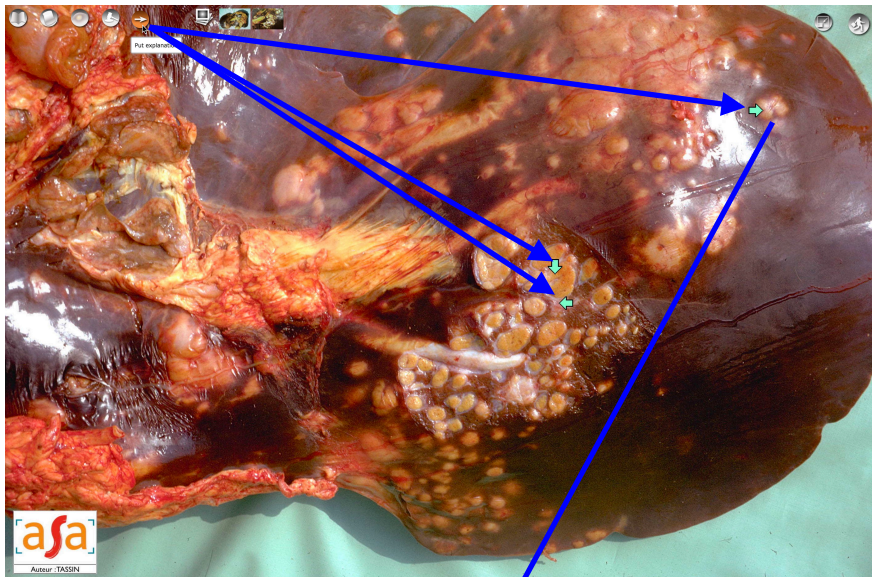
Legal references



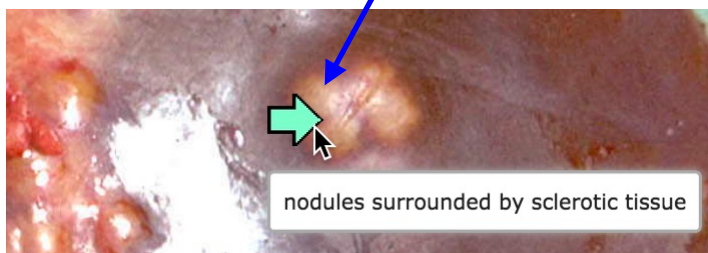
Detailed instructions for AsaDia 3 Web

INSTRUCTIONS

The "Place explanations" button shows up to 4 green arrows on the photograph to highlight interesting details.



When hovering over a green arrow, the description of the detail appears.



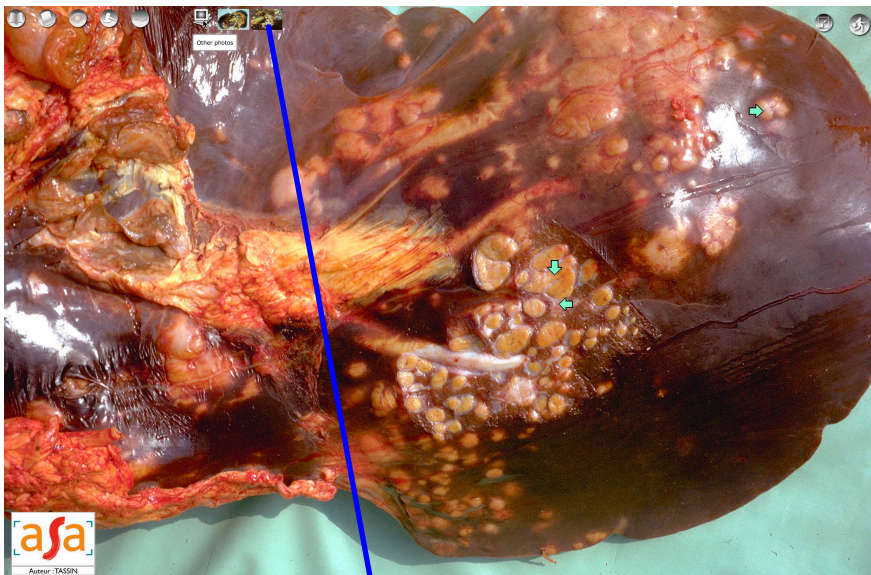
Detailed instructions for AsaDia 3 Web

INSTRUCTIONS

It may happen that the photo displayed in full page is only one aspect of the same lesion that is the subject of other photographs.

In this case, they appear as thumbnails to the right of a drawing "Other photographs".

A click on the thumbnail replaces the current photo with the one clicked and the thumbnail is replaced by the old photo.



Detailed instructions for AsaDia 3 Web

INSTRUCTIONS

Except in very special cases, the web browser window does not have the same proportions (width / height) as the image of the lesion.

The program takes the advantage of occupying the full width of the browser window to better reflect the full-page effect.

You can, however, force the program to the other alternative: the height of the photograph will be that of the window.

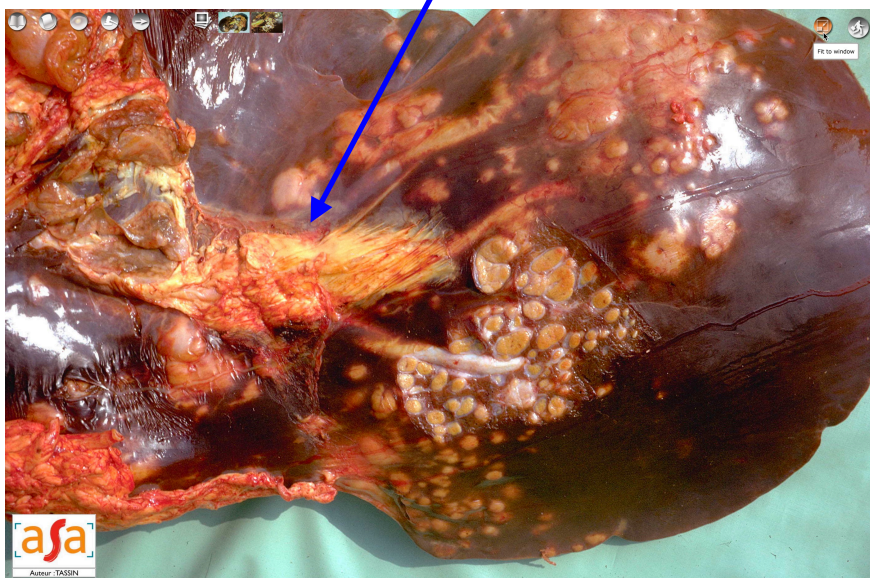
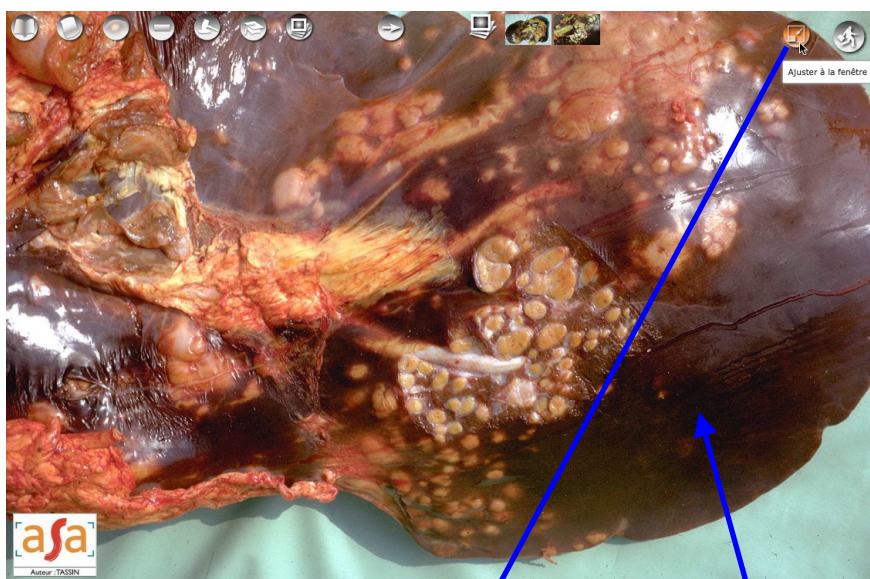
To do this, click on the "Adjust to window" button. The photograph occupies the entire window. This means that a right part of the photo is not visible.

The elevators of the browser, however, allow to see the hidden part.

The button name is updated to "Occupy Full Width".

A click on this button returns to the initial situation.

The "Exit" button ends the full page mode to return to the previous screen.



Detailed instructions for AsaDia 3 Web

INSTRUCTIONS

The list of lesions is the anatomo-pathological nomenclature of the slaughterhouse lesions.

This page is multilingual (English flag available).

To go to the lesions page, click on the "Lesions list" tab.

This page shows:

- at the top, under the title, a user manual including a filter field;

- lower the table of the 163 lesions with for each one of them its identifier, its name and an icon "Detail" making it possible to make appear its complete description in the yellow frame on the right of the table.

To filter the lesions list, type a string of characters.

This will be interpreted as and when it is entered by restricting the lesions to those containing the chain in the name, the reflex card or the description of the lesion.

Here enter the string "calci" selects 10 lesions having it in at least one of the criteria detailed above.

To reveal the detail of a lesion, simply click on the Detail icon of the desired line.

The selected line will appear in red.

Visit the ASA Website Find a lesion **List of lesions** List of photos

List of lesions

To view the details of a lesion, click the image of the detail of the corresponding line
To search the lesions that containing a string *, enter it in the following field:

* The research, starting after the third character entered, focuses on the name of the lesion, what do you do and description of the lesion.

N°	Name of lesion	Detail
1	Non specific abscess	
2	Omphalophlebitic abscess	
3	Foreign body abscess	
4	Pylephlebitic abscess	
5	pyemic abscesses	
6	no lesion	
7	actinobacillosis/ actinomycosis	
8	Pulmonary adenomatosis	
9	Adipose xanthosis	
10	Muscular albinism	
11	Damage	
12	Amyloidosis	
13	Localized amyotrophy	
14	Equine Infectious Anemia	
15	Congenital abnormality	
16	Anthracosis	
17	Aphtha	
18	Arthritis	
19	Ascariidiosis	
20	Pulmonary atelectasis	

163 lesions out of a total of 163

Click the icon detail of lesion you want to display the content.

To view the details of a lesion, click the image of the detail of the corresponding line
To search the lesions that containing a string *, enter it in the following field:

* The research, starting after the third character entered, focuses on the name of the lesion, what do you do and description of the lesion.

N°	Name of lesion	Detail
7	actinobacillosis/ actinomycosis	
26	Calcinosis	
37	Hepatoperitoneal cysticercosis	
38	Muscular cysticercosis	
43	Distomatosis / Fasciolosis	
45	Echinococcus	
72	Hydronephrosis	
75	Icterus	
109	Onchocercosis (lesion associated with)	
116	Paratuberculosis (lesion associated with)	
145	Strongylosis (hepatic lesion of)	
147	Strongylosis (peritoneal lesions of)	

12 lesions out of a total of 163

Click the icon detail of lesion you want to display the content.

N°	Nom de la lésion	Détail
1	abcès non spécifiques	
2	abcès omphalophlébitiques	
3	abcès par corps étranger	
4	abcès pyléphlébitiques	
5	abcès pyohémiques	
6	absence de lésion	
7	actinobacillose / actinomycose	
8	adénomatose pulmonaire	
9	adipoxanthose	
10	albinisme musculaire	
11	altération	
12	amyloïdose	
13	amyotrophie localisée	
14	anémie infectieuse des équidés	
15	anomalie congénitale	
16	anthracose	
17	aphtes	
18	arthrite	

ACTINOACILLOSE / ACTINOMYCOSE

Description de la lésion :
Les lésions sont caractérisées par la présence d'un pus grumeleux à odeur fade ou spermatique, où se trouvent parfois de minuscules grains jaunes, contenu dans un tissu pyogène velouté lui-même entouré d'une réaction scléreuse infrarubrique importante. Les organes atteints sont soit les os, soit les tissus mous : poumon, foie, langue, muscle et les noeuds lymphatiques. Le pus actinomycosique ne se calcifie jamais.

Type lésionnel :
lésion inflammatoire / inflammation spécifique

Fiche réflexe :
Rechercher d'autres localisations.

Fréquence :
Occasionnel

Ne pas confondre avec :
tuberculose (lésions de)

Réglementation :
Règlement (CE) 854/2004 du 29 avril 2004 Annexe I Section II Chapitre V - § 1 alinéa p viandes [...] si elles présentent des altérations physiopathologiques, des anomalies de consistance, des anomalies organoleptiques

List of lesions

19/04/2018

List of lesions
Filter the list
View the detail of a lesion

version 3.1

page 11 of 12

Detailed instructions for AsaDia 3 Web

INSTRUCTIONS

The list of lesions is the anatomo-pathological nomenclature of the slaughterhouse lesions.

To go to the lesions page, click on the "Lesions list" tab.

This page shows:

- at the top, under the title, a user manual including a filter field;
- lower the table of the 163 lesions with for each one of them its identifier, its name and an icon "Detail" making it possible to make appear its complete description in the yellow frame on the right of the table.

To filter the lesions list, type a string of characters.

This will be interpreted as and when it is entered by restricting the lesions to those containing the chain in the name, the reflex card or the description of the lesion.

Here enter the string "calcifica" selects 11 lesions having it in at least one of the criteria detailed above.

To reveal the detail of a lesion, simply click on the Detail icon of the desired line.

The selected line will appear in red.

Visit the ASA Website Find a lesion List of lesions List of photos

List of photos

To view the details of a photo, click the image of the detail of the corresponding line

To search the photos that containing a string *, enter it in the following field:

* The research, starting after the third character entered, focuses on the name of the lesion, the organ, the species and description of the photo

N°	Title of the photo	Detail
10009	Fibrous peritonitis on peritoneum of Cattle	
10012	Congestive/exudative peritonitis on peritoneum of Cattle	
10017	Fibrous pleurisy on lung of Cattle	
10025	Congestive/exudative peritonitis on carcass of Cattle	
10029	Gangrene on peritoneum of Cattle	
10031	Congestive/exudative pleuritis on pleura of Cattle	
10037	Tuberculosis on peritoneum of Cattle	
10058	Mesothelioma on peritoneum of Cattle	
10067	Mesothelioma on peritoneum of Cattle	
10076	Melanosis on peritoneum of Cattle	
10093	Swine Erysipelas on heart of Pigs	
10102	Epithelial nephritis glomerulonephritis on kidney of Pigs	
10103	Swine Erysipelas on skin of Pigs	
10111	Interstitial pneumonia on lung of Sheep	
10113	Caseous lymphadenitis on lymph node of Sheep	
10114	Caseous lymphadenitis on pluck of Sheep	
10120	Paratuberculosis (lesion associated with) on digestive tract of Cattle	
10121	Atrophic rhinitis on head of Pigs	

Click the icon detail of photo you want to display the content.

1693 lesions out of a total of 1693

To view the details of a photo, click the image of the detail of the corresponding line

To search the photos that containing a string *, enter it in the following field: calcifica

* The research, starting after the third character entered, focuses on the name of the lesion, the organ, the species and description of the photo

N°	Title of the photo	Detail
11265	Tuberculosis on testis of Cattle	
40627	Tuberculosis on liver of Pigs	
50453	Muscle cysticercosis on heart of Cattle	
60016	Tuberculosis on carcass of Cattle	
60017	Tuberculosis on pleura of Cattle	
60018	Tuberculosis on lymph node of Cattle	
60019	Tuberculosis on peritoneum of Cattle	
60020	Tuberculosis on pleura of Cattle	
60021	Tuberculosis on carcass of Cattle	
60022	Tuberculosis on lymph node of Cattle	
60024	Tuberculosis on liver of Cattle	

Click the icon detail of photo you want to display the content.

11 photos out of a total of 1693

The research, starting after the third character entered, focuses on the name of the lesion, the organ, the species and description of the photo

N°	Title of the photo	Detail
10009	Fibrous peritonitis on peritoneum of Cattle	
10012	Congestive/exudative peritonitis on peritoneum of Cattle	
10017	Fibrous pleurisy on lung of Cattle	
10025	Congestive/exudative peritonitis on carcass of Cattle	
10029	Gangrene on peritoneum of Cattle	
10031	Congestive/exudative pleuritis on pleura of Cattle	
10037	Tuberculosis on peritoneum of Cattle	
10058	Mesothelioma on peritoneum of Cattle	
10067	Mesothelioma on peritoneum of Cattle	
10076	Melanosis on peritoneum of Cattle	
10093	Swine Erysipelas on heart of Pigs	
10102	Epithelial nephritis glomerulonephritis on kidney of Pigs	
10103	Swine Erysipelas on skin of Pigs	
10111	Interstitial pneumonia on lung of Sheep	
10113	Caseous lymphadenitis on lymph node of Sheep	
10114	Caseous lymphadenitis on pluck of Sheep	
10120	Paratuberculosis (lesion associated with) on digestive tract of Cattle	
10121	Atrophic rhinitis on head of Pigs	



TUBERCULOSIS (LESIONS ASSOCIATED WITH) ON PERITONEUM OF CATTLE

Description of the lesion:

See No. 12663.
nodules pinkish white fibro-caseous becoming coalescing surface diaphragmatic peritoneum. Form chronic serous.

Type lesion:
inflammatory lesion / specific inflammation

What do you do ?
It is important to distinguish the stabilized forms, from the slowly and locally evolving forms and the generalized forms of the disease. The suspicious lesion should be sampled and sent to a laboratory for confirmation. Tuberculosis is a notifiable disease in cattle, goats, buffaloes and domesticated Cervidae. In France, the government is to be notified if tuberculosis is diagnosed in domesticated or wild animal.

Frequency:
Rare

Etiology:

1693 photos out of a total of 1693

List of photos

19/04/2018

List of photos
Filter the list
View the detail of one photo

version 3.1

page 12 of 12